

Ware grootte = 17 cm x 24 cm

Tekstblok = 13 cm x 20 cm

Bovenmarge tot aan tekstblok = 2 cm

Uw doctoraatsproefschrift in druk

Pagina lay-out :

Ware grootte (= 17 x 24 cm) Details zie uitwerking op dit blad.
Lettergrootte : Basislettertype Verdana 9 pt.

Linkermarge = 2 cm

Rechtermarge = 2 cm

Ondermarge tot aan tekstblok = 2 cm

True size = 17 cm x 24 cm

Text block = 13 cm x 20 cm

Your Phd in print

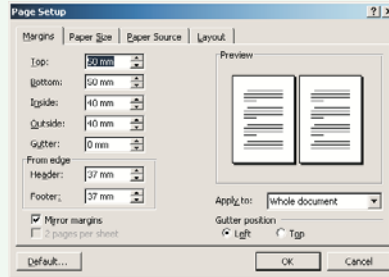
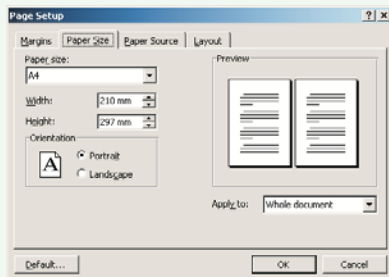
Layout of page :

True size (= 17 x 24 cm)
Details, see computation on this sheet.

Font : Basic font Verdana 9 pt.

Page setup :

You can start directly from the format 17x24 cm (=most easy setup)
or from setup A4 with following margin setup...



Double-Sided,

be careful to make sure that your PDF pages are arranged to print exactly as you want them.

- make sure that the pages you want to face each other will face each other, and
- make sure that the first page of each chapter or section will begin on the correct side of the page

How do I make sure that my PDF file will print properly for double-sided printing?
First, note that we do not alter your PDF file in any way. The content and margins of your PDF file will be printed exactly as you give it to us.

For double-sided printing, the pages will also appear after each other, except that the PDF pages with even Numbers will print BEHIND the PDF pages with odd Numbers, as shown below.

Left margin = 2 cm

Right margin = 2 cm

Printing color :

When you send us your PDF file, you can choose for black/white or full-color printing.

The last option means that only those pages in color will be charged the color rate.

From bottom margin to text block = 2 cm